

# Centrify Identity Service™

Cloud and mobile are here to stay



Cloud and mobile apps are quickly forcing their way into the enterprise, facilitating employee productivity, but exposing business-critical data. Cloud apps, and the mobile devices that can access app data, are often outside of IT control.

## Managing Access is the Problem

### Too many locks — too many keys

Managing and securing access to each individual cloud app and mobile device means managing unique accounts, passwords, and policies across hundreds — often thousands — of endpoints and apps. With so many disparate systems and devices, IT needs a single solution from which to provision users and manage access policy across all apps, from any device, regardless of location.

### Password sprawl wastes time for IT and users

With growing application access, users are resorting to password sharing and reuse, exposing corporate data to attacks based on compromised credentials. Compounding this issue is an exponential increase in helpdesk calls and tickets for password resets — reducing IT productivity and user satisfaction.

### User productivity leads to IT inefficiency

With dozens — or hundreds — of apps in use, controlling which users have access to specific apps becomes unmanageable. Staying on top of account provisioning is not only cumbersome, but leads to security holes and failed compliance audits if terminated employees have access to corporate apps and data after they leave.

## Identity is the Solution

### Integrated cloud app and mobile management

Centrify Identity Service uniquely unifies cloud app and mobile management into an enterprise cloud service. Centrify leverages identity to secure and manage users' access to applications from any device, regardless of location.

By leveraging a single identity across cloud, mobile and onsite apps, users get a single username and password across all the apps they use for work, and IT can enforce consistent access policies based on user identity.

Identity Service provides a single, simple cloud portal for app management. Users get one-click access all their apps from any device, and IT gets policy-based control, and automated provisioning and account management.

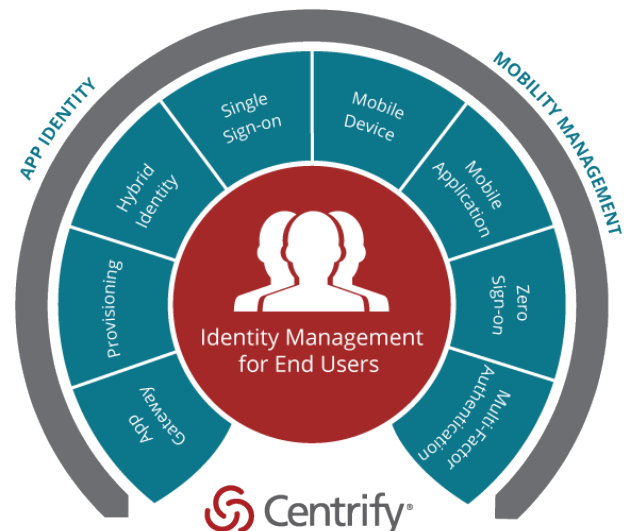
## Centrify Identity Service: The Benefits of Integrated Identity Management

Centrify Identity Service provides security, simplicity and control.

IT gets one place to manage all accounts and devices. Users get single sign-on across cloud and mobile apps from any device.

### Security

- Eliminate the security risk of simple, reused and/or improperly managed passwords
- Control cloud and mobile applications with identity-based policy across apps and devices
- Enable secure, remote access to on-premises apps — without the risks and hassles of VPNs
- Implement a secure BYOD policy with Centrify's integrated Mac and mobile device management. Secure the Centrify app on mobile devices by unlocking with NFC, PIN, passcode or fingerprint.

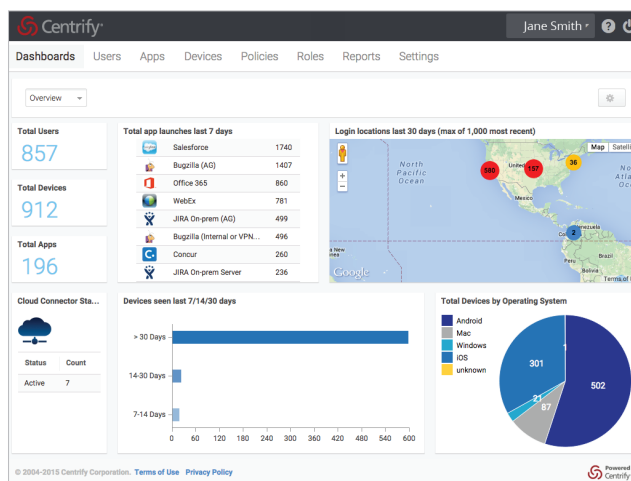


### Simplicity

- Automate account provisioning/deprovisioning and licensing entitlements for business apps
- Eliminate separate policy silos. Integrate management of cloud, mobile and onsite apps
- Reduce helpdesk tickets for password resets, app requests, and device management, with user self service and automated workflows

### Control

- Prove ROI and show compliance with granular app and device reporting
- Enforce user policy from a single authoritative source, applied across devices, apps, and locations
- Control access using Active Directory, LDAP, Google Directory, Cloud Directory, external users, or any combination



The Identity Service Admin Portal gives IT control of apps, devices and policy

## Flexible Subscription Options

### Centrifly Identity Service

#### Single Sign-on

Turnkey support for thousands of cloud, mobile and on-premises apps, or add your own app.

	Express	App	App+
Single Sign-on	Up to 3 apps	✓	✓

#### Enterprise Mobility Management

Integrated mobile device and app management. Device certificate management for PKI.

Enterprise Mobility Management	MDM only	✓	✓
--------------------------------	----------	---	---

#### Identity from Anywhere

Internal: Active Directory or LDAP. External: Cloud Directory or External users.

User self-service & password resets.

Identity from Anywhere		✓	✓
------------------------	--	---	---

#### Multi-factor Authentication (MFA) and Policy

Context-based step-up and MFA using managed devices.

Rich per-app policy and reporting. 1-click authentication. Authentication profile.

Multi-factor Authentication (MFA) and Policy		✓	✓
--	--	---	---

#### User Account Provisioning

Full lifecycle management of cloud and on-premises apps & devices based on role: access, authorization, provisioning, and revocation.

User Account Provisioning		✓	✓
---------------------------	--	---	---

#### Deepest Mac Management

Remote lock & wipe. Active Directory Join. Granular policy controls thru GPO within Active Directory. FileVault2 encryption. PKI Certificate.

Deepest Mac Management		✓	✓
------------------------	--	---	---

#### Workflow

Automated workflows for managing app request, approval, and provisioning.

Workflow			✓
----------	--	--	---

#### On-Premises App Gateway

Secure access to on-premises apps without VPN. Single cloud connector across multiple apps, No additional infrastructure required.

On-Premises App Gateway			✓
-------------------------	--	--	---

Choose the Edition that's right for you: [www.centrifly.com/products/identity-service/compare-editions/](http://www.centrifly.com/products/identity-service/compare-editions/)



As the only industry recognized leader in both Privileged Identity Management and Identity-as-a-Service, Centrifly provides a single platform to secure every user's access to apps and infrastructure in today's boundaryless hybrid enterprise through the power of identity services. This is the Next Dimension of Security in the Age of Access.

Founded in 2004, Centrifly is enabling over 5,000 customers, including over half the Fortune 50, to defend their organizations. Centrifly is a privately held company based in Santa Clara, California. To learn more visit [www.centrifly.com](http://www.centrifly.com). The Breach Stops Here.

Centrifly is a registered trademark, and Centrifly Identity Service, The Breach Stops Here and Next Dimension Security are trademarks of Centrifly Corporation. Other trademarks mentioned herein are the property of their respective owners.

SANTA CLARA, CALIFORNIA	+1 (669) 444 5200
EMEA	+44 (0) 1344 317950
ASIA PACIFIC	+61 1300 795 789
BRAZIL	+55 11 3958 4876
LATIN AMERICA	+1 305 900 5354
EMAIL	<a href="mailto:sales@centrifly.com">sales@centrifly.com</a>
WEB	<a href="http://www.centrifly.com">www.centrifly.com</a>