

What's New in Centrify Identity Service: App Edition 15.8

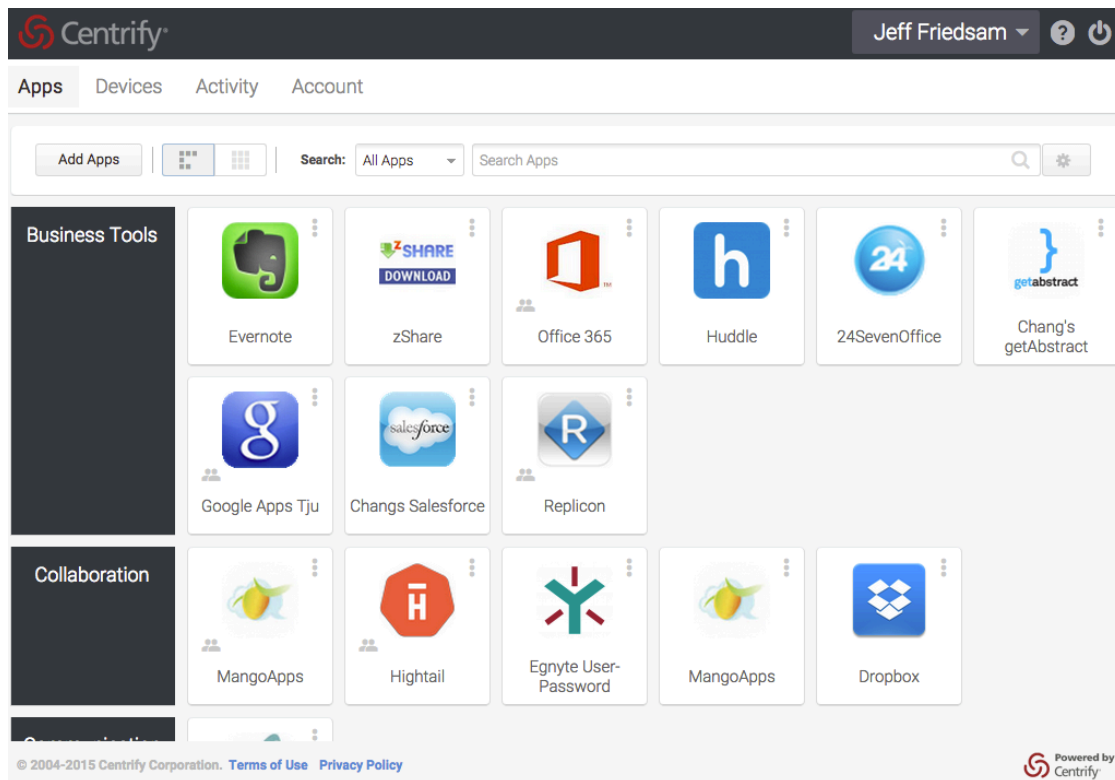
Centrify Identity Service 15.8 includes several exciting new features and updates.

New Login Pages

The login page UI has been updated to match the new look and feel of the portals that we introduced a few months ago. More importantly, the performance has been improved by up to 60% faster logins.

App Categories and Tags

New view in user portal featuring apps grouped by category. Administrators are now able to see and edit the category for an application that the User Portal leverages for grouping of apps. End-users have the final say in how apps are grouped in the user portal as the apps are ultimately grouped by the user-provided tags.

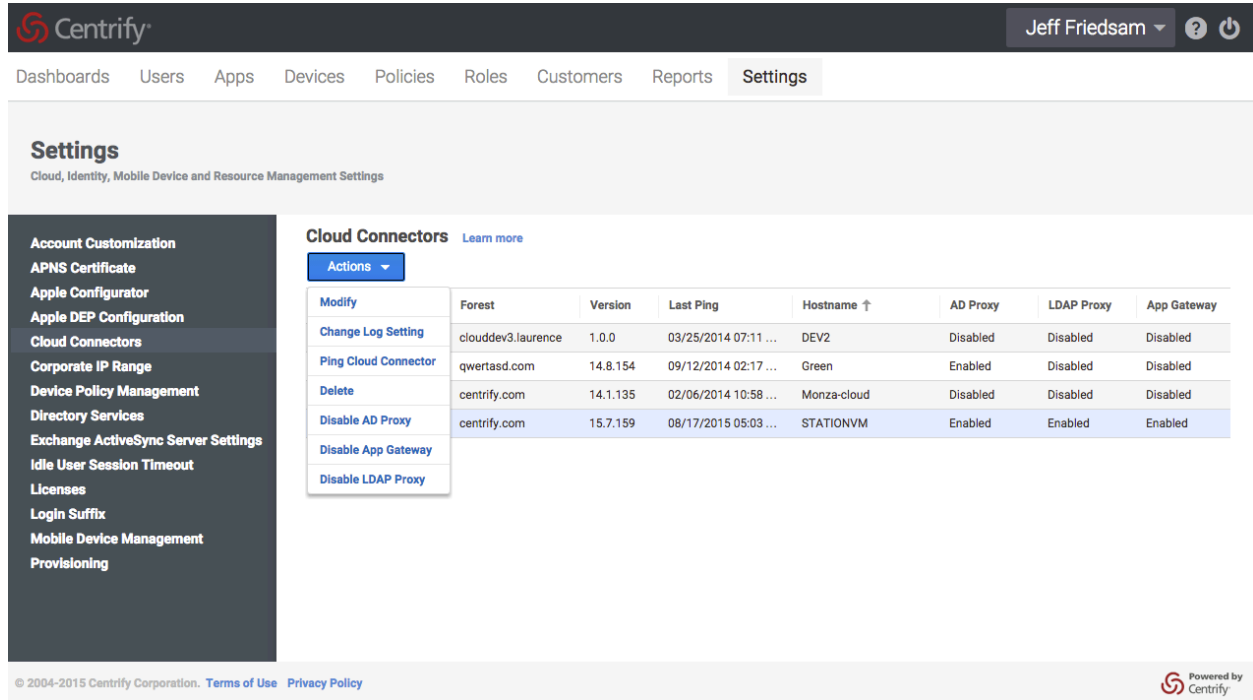


Summary of Administrative Rights for Users

Administrative rights are now summarized and easily viewable within the User's Roles tab, with click-through to role settings.

Improved Cloud Connector Configuration

The Cloud connector configuration has been improved with the ability to enable / disable proxy and gateway features for each connector. This enables administrators to easily optimize their infrastructure based on how they intend to use the features of Centrify Identity Service.

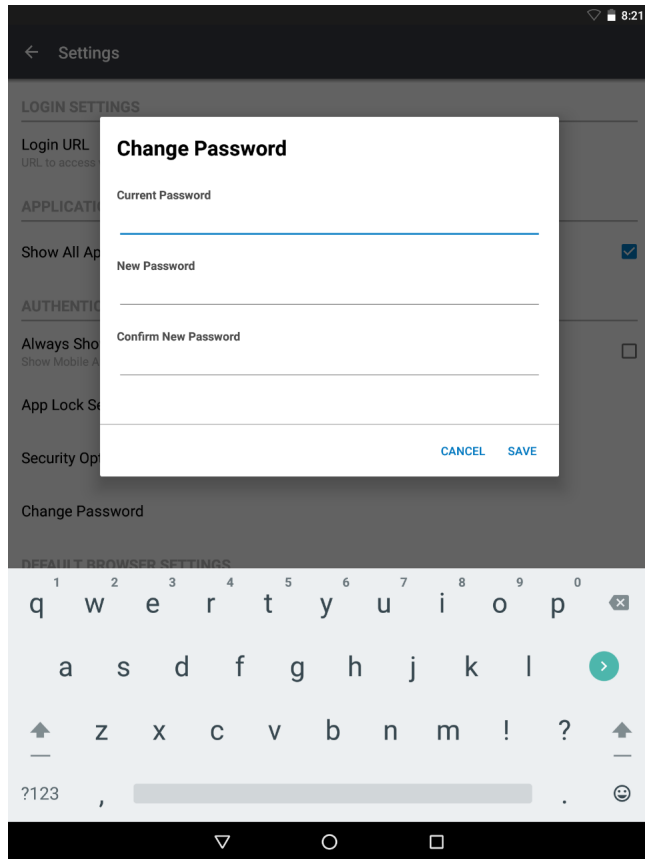


The screenshot shows the Centrify web interface. At the top, there is a navigation bar with the Centrify logo on the left and the user name 'Jeff Friedsam' on the right. Below the navigation bar, there is a menu with options: Dashboards, Users, Apps, Devices, Policies, Roles, Customers, Reports, and Settings. The 'Settings' page is active, showing a sidebar with various configuration categories and a main content area for 'Cloud Connectors'. The sidebar categories include Account Customization, APNS Certificate, Apple Configurator, Apple DEP Configuration, Cloud Connectors (highlighted), Corporate IP Range, Device Policy Management, Directory Services, Exchange ActiveSync Server Settings, Idle User Session Timeout, Licenses, Login Suffix, Mobile Device Management, and Provisioning. The 'Cloud Connectors' section has a 'Learn more' link and an 'Actions' dropdown menu. Below this is a table with columns: Forest, Version, Last Ping, Hostname, AD Proxy, LDAP Proxy, and App Gateway. The table contains three rows of connector data.

Actions	Forest	Version	Last Ping	Hostname ↑	AD Proxy	LDAP Proxy	App Gateway
Modify	clouddev3.laurence	1.0.0	03/25/2014 07:11 ...	DEV2	Disabled	Disabled	Disabled
Change Log Setting	qwertasd.com	14.8.154	09/12/2014 02:17 ...	Green	Enabled	Disabled	Disabled
Ping Cloud Connector	centrify.com	14.1.135	02/06/2014 10:58 ...	Monza-cloud	Disabled	Disabled	Disabled
Delete	centrify.com	15.7.159	08/17/2015 05:03 ...	STATIONVM	Enabled	Enabled	Enabled
Disable AD Proxy							
Disable App Gateway							
Disable LDAP Proxy							

Password Change from Mobile

Users are now able to change Active Directory or Cloud User password from the Centrify mobile client.



True SSO on Mobile

Authentication is now possible from outside the Centrify client. Links in emails or direct access to URLs from enrolled devices no longer require login.

App Compliance Report

Report for native app installations across devices and users can be generated and exported to CSV or Excel.



Trigger Fist

iOS - App Store **Deployed**
[Actions](#)

[Application Configuration](#)

Application Settings

Description

User Access

Changelog

Workflow(NY)

Deployment Status

Deployment Status [Learn more](#)

Export

Device Name	User Name	Type	Status	Device Status
Centrify's iPad	michael.burk...	Automatic	Installed	Enrolled
samsung:4.2.2	jason.yokota...	Automatic	Not Installed	Enrolled
SAMSUNG-S...	michael.burk...	Automatic	Not Installed	Enrolled
Centrify Dev (...)	michael.burk...	Automatic	Not Installed	Enrolled

Mac App Management Support for Updates

- Bundle IDs are no longer needed
- To update a package, simply update the PKG file to a newer one
- Version numbers are ignored; the latest file will be deployed to the devices it is assigned to

Device Enrollment Program Support for Mac

- Customers must register with Apple's Device Enrollment Program (DEP)
- DEP Support now extends to Mac OS X (10.9 and later)
- Assert ownership is logged via Serial number or Apple Order Number

Cleaner and Safer Federation Configuration for Office 365

- The managed domain will not be listed
- Domain list is sorted alphabetically

New Applications (SAML)

- Atlassian Confluence
- Altassian Stash
- Elastica for Cisco
- Voicethread

Contact Centrify

Centrify strengthens enterprise security by managing and securing user identities from cyber threats. As organizations expand IT resources and teams beyond their premises, identity is becoming the new security perimeter. With our platform of integrated software and cloud-based services, Centrify uniquely [secures and unifies identity](#) for both privileged and end users across today's hybrid IT world of cloud, mobile and data center. The result is stronger security and compliance, improved business agility and enhanced user productivity through [single sign-on](#). Over 5000 customers, including half of the Fortune 50 and over 80 federal agencies, leverage Centrify to secure their identity management. Learn more at www.centrify.com.

Santa Clara, California:	+1 (669) 444-5200	Email:	sales@centrify.com
EMEA:	+44 (0) 1344 317950	Web:	www.centrify.com
Asia Pacific:	+61 1300 795 789		
Brazil:	+55 11 3958 4876		
Latin America:	+1 305 900 5354		