

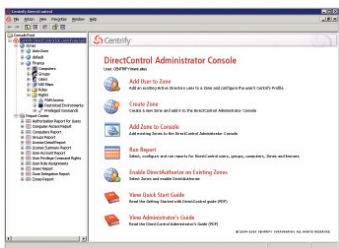
Early warning: Another convergence is on the way and the emphasis is, increasingly, on the total account management lifecycle, says **Peter Stephenson**.

My readers know that I am interested in the convergence of products, technologies and companies. Well, another one of these is on the way. Many of the identity management products we looked at this month are beginning to look like something more. The emphasis is, increasingly,

on the total account management lifecycle. And, there are a couple of interesting twists. For example, there was a time when there was Windows and there was UNIX/Linux and never the twain shall meet. Today, even die-hard *nixers are acknowledging that for some parts of the enterprise Windows is

likely to rule the roost. That means that these large-scale servers – often housing large databases – must, for efficiency's sake, authenticate through some unified mechanism. In the Windows world, that is likely to be Active Directory. If you want to play in the Microsoft sandbox, you have to play by Microsoft's rules.

Centrify Suite 2010



Vendor Centrify
Price starts at \$350/server
Contact www.centrify.com

The Centrify Suite allows administrators to control users' access to Linux and UNIX machines using their already existing Active Directory accounts. This product features the ability to place granular access controls on those users, such as what systems they can access and when they can access them, as well as what commands they can run.

This tool is fairly straightforward to install and deploy. The product itself consists of two main parts: The first is the management console, which is installed on a Windows machine that has access to an Active Directory domain controller. The second is the agent that is installed on the Linux or UNIX

system. The management console installs in just a few minutes and is guided by an intuitive installation wizard. The connector is just as easy to install, even if you are not a Linux guru. The installer application is deployed through the command line and does a number of preinstall checks to be sure communication among the systems is working properly.

After installation is complete, users can be added to policies via the easy-to-use management console. Once a user is assigned to a policy, that user can enlist their Active Directory credentials to login to the assigned Linux machine just as if they were logging into a Windows box. This product not only allows administrators to streamline accounts, but also to be certain that users do not get more permissions and rights than they need.

Documentation consists of several PDF configuration guides, as well as an in-depth administrator guide. We found all documentation to be easy to follow with many step-by-step instructions and screen shots.

Centrify offers both standard and premium support for customers. Premium support includes all the

features of the standard support, as well as 24/7/365 assistance, faster response times, and named contacts.

At a price starting at \$350 per server, we find this product to be a good value for the money. The Centrify Suite provides solid account tools for granting and managing user access to machines other than Windows without having to create local accounts on those machines.

SC MAGAZINE RATING

Features	★★★★★
Ease of use	★★★★★
Performance	★★★★★
Documentation	★★★★★
Support	★★★★★
Value for money	★★★★☆

OVERALL RATING ★★★★★

Strengths User provisioning to Linux and UNIX using Active Directory accounts.

Weaknesses None that we found.

Verdict A good marriage of *nix and Active Directory.



A good marriage of *nix and Active Directory.

Peter Stephenson

